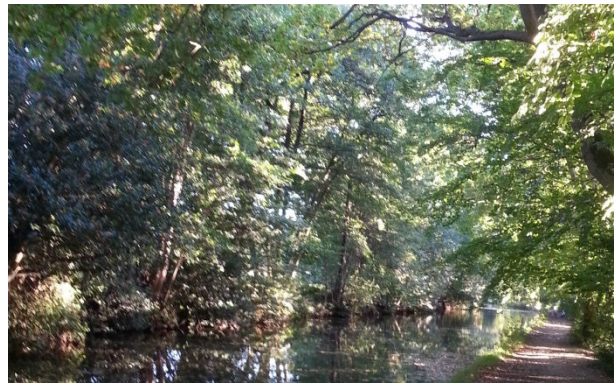


If you live, work or play
in Deepcut, it's time
to tell us what you want
for the future



Deepcut Neighbourhood Forum Consultation: March 2016

Please tell us – What do you **love** about Deepcut? OR What **don't** you like?

We're preparing a **Neighbourhood Plan** which is our opportunity for the people who live here now to say how they would like our village to develop over the next five to ten years.

We think we are more or less on the same page as you, but the plan needs to be based on a broad consensus of local opinion, so we'd really like to know what you think. It will shape the new plan.

We've set out here what we think the key issues are. Do you agree or not? Let us know! There are several ways to feed back to us.....Please see our contact details at the bottom of page 2.

The woods and the open green spaces

We're surrounded by glorious woods and ancient heathland. How should we protect and enhance this fantastic resource? How do you use the open spaces? Would you use them more if they were managed or organised differently? Could we improve what is provided in any way, for example nature trails, children's recreation areas, improved planting, an off-road cycle track, a woodland education centre? Tell us what you'd do to make these areas even more special....



A heart for our village

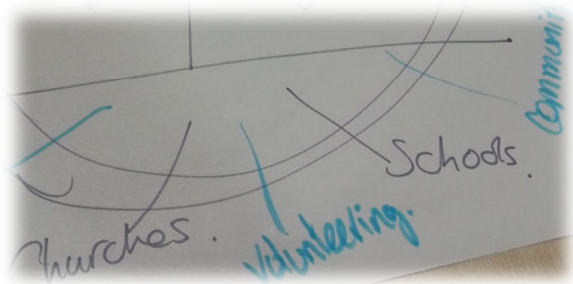
Let's face it, we have no village centre in Deepcut. The new development on the barracks site will have some attributes of a "village green" but part of our job must be to make sure the bits of Deepcut on the west of Deepcut Bridge Road and to the north of the barracks are knitted in to the developments on the barracks site and not neglected. At the least we need a facelift for our existing shops and eating places. But what other features and amenities would you like to see in the centre of our village? A bigger range of shops? Some community services? What could be improved? What should be added? What do we lack? What do we want?

Whether you live here or work here or visit the woods, the canal or the park, give us your views!

Get in contact with us at: stakeholdersconsultation@deepcutforum.org.uk

What services and facilities do we want here?

Now is our chance to say what we want provided in our village. Do we need a doctors' surgery or a dentist? Do we need a better range of shops? What do young people want round here? If you are more elderly, what local services would be most convenient for you? If you work in Deepcut, what do you want on your doorstep in terms of support services?



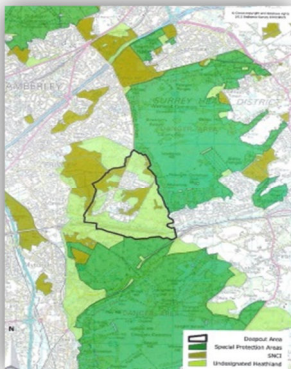
Traffic management, parking and transport



We already know a lot about local people's concerns about traffic and transport in this area, but let's see if we can have an impact by stating our clear views in our Neighbourhood Plan. We can't promise anything because it's not in our gift, but we can make sure that before new policies on traffic calming or parking are introduced, our preferences are clearly known. We may also be able to influence the developers on the barracks site. So let us know your views on the existing bus service, the traffic congestion, making routes and intersections safer and what we should be doing to improve Deepcut in terms of traffic management and parking.

Business and enterprise development

Have you been in contact with the new Deepcut Business Forum which has already started collecting ideas from local businesspeople? They'll be very pleased to get your input. We know that about one in ten local residents is self-employed and perhaps working from home, rather than in the few business premises locally. The growth of Deepcut will bring lots of new opportunities. Whether you employ others, or work as a sole-trader, we need to know how you see your business developing and what infrastructure you need in place in order to survive and thrive in this area over the next five to ten years. Tell us the positive changes you want (eg quicker broadband) so we can help to publicise and encourage these positive developments



Protecting the character of our area and the environment

Let's aim to give this area a big facelift, but let's also work to protect its character and the local environment for our families and for future generations. How do we ensure the facilities we have are updated whilst campaigning to preserve what is great about our area? The triangle in the middle of this map – that's us! At the centre of a large heathland teeming with wildlife, a bit of a green lung between the huge settlements of Camberley and Woking on each side. Surrey Heath thinks the environment could be "degraded" in the future. What do you think? How do we set about protecting the landscape character of this area? How do we make sure any new developments actually enhance the village?

What to do now We need to hear your views. This is how you can let us know what you think:

Pick up a questionnaire in the café, in the Spar, at the village centre, fill it in and return it to us at the address below. OR You can go to our website on www.stakeholdersconsultation@deepcutforum.org.uk to download and complete our questionnaire, which should be returned to stakeholdersconsultation@deepcutforum.org.uk by the end of May.

OR We will be leafletting your area in the next few weeks. Please respond when you see something come through your letterbox. We will also be contacting key stakeholders by phone to talk about their plans for the area in the future and how they fit in with residents' preferences.

Get in contact with us at: stakeholdersconsultation@deepcutforum.org.uk

Get in contact with us at: stakeholdersconsultation@deepcutforum.org.uk