

Skanska site office  
Princess Royal Barracks  
Deepcut  
GU16 6RN  
hello@mindenhurst.co.uk



# MINDENHURST

# Spring 2021

# NEWSLETTER



Welcome to our latest newsletter, which aims to keep you updated on the construction of Mindenhurst, your new neighbourhood on the site of former Princess Royal Barracks, Deepcut.

## Our virtual consultation

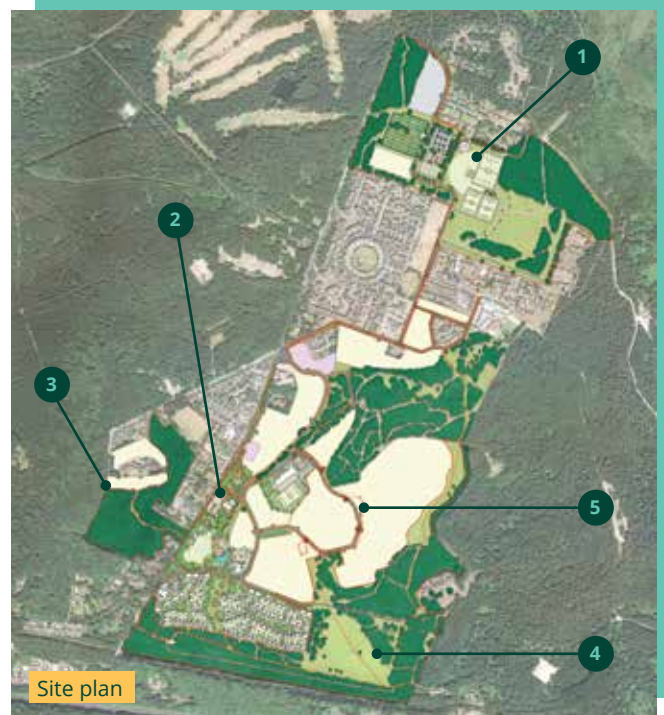
As you may have seen from our recent flyer, we have been running a virtual consultation detailing the remaining infrastructure to be delivered.

A series of Reserved Matters Applications are being submitted for the next stage of infrastructure development at Mindenhurst. This includes areas of newly accessible public open space, a new church hall for the community and roads & infrastructure to serve future housing. These applications will cover all the remaining non-residential areas of the site.

The virtual consultation provides an opportunity to view our proposals and submit feedback on the plans.

The applications will provide details of how Skanska proposes to deliver:

- 1 The community sports hub and northern open space
- 2 The public park and new church hall next to St Barbara's Church
- 3 New accessible Natural Green Space surrounding the former Sergeant's Mess
- 4 The southern SANG (Suitable Alternative Natural Greenspace)
- 5 The loop road through the site.



To view the virtual consultation, please visit:  
[www.mindenhurst.co.uk](http://www.mindenhurst.co.uk)

There is still time to leave your feedback as our consultation will be open for comments until the **end of Monday 5 April 2021.**

You can also sign up for email updates.



## Bovis Homes at the heart of Deepcut's growing community



As housebuilding continues to operate during these challenging times, Bovis Homes is constructing high-quality new-builds at Mindenhurst in Deepcut.

The first parcel, A1, is located on Cyprus Road and will include a selection of one to five-bedroom properties. Our show home is due to launch this summer.

Bovis Homes is part of Vistry Group – a five-star housebuilder that is uniquely positioned in the top five in the UK. The designs of our homes and construction techniques blend tradition with innovation, creating well-built homes with modern living standards.

Bovis' regional marketing manager, Alix Laflin, said: "We are very excited to have started on our new homes at Deepcut and to join the Mindenhurst community. It has been a development that we have been eager to launch, and we look forward to making a positive difference to the village. This is a fantastic location and we are proud of the houses we are building here."

Bovis Homes is building a selection of one and two-bedroom apartments and two, three, four and five-bedroom homes, from our latest collection. The first homes to be released will be two and three-bedroom properties.

The two-bedroom Holly house type is perfect for first-time buyers or those looking to downsize. Starting from £375,000, the garden-facing kitchen/dining area is spacious while the front-facing living room is light and bright.

The three-bedroom Hazel, starting from £435,000, has stunning feature windows in the front-facing sitting room and en-suite master bedroom. The stylish, open-plan kitchen/dining room is ideal for family meals and entertaining friends while the three bedrooms provide plenty of space to relax and recharge.

Properties in Bovis Homes' latest homes collection are named after British trees and focus on well-proportioned exteriors with a real sense of light and flow on the inside. Designed for modern living, home buyers can relax in open-plan living areas and stylish fitted kitchens, and bring the outside in with stunning bi-fold doors.

Vistry, formed in January 2020, brings together the energy and talents of Bovis Homes, Linden Homes and the newly-named Vistry Partnerships (formerly Galliford Try Partnerships).

To find out more about Bovis' location at Mindenhurst and the house types available, visit [www.bovishomes.co.uk](http://www.bovishomes.co.uk) and for more about Vistry, visit [www.vistrygroup.co.uk](http://www.vistrygroup.co.uk)

## Trivselhus at Mindenhurst launches this Easter

Since we last updated you, the eagle eyed of you may have noticed our hoarding going up at the Trivselhus at Mindenhurst site. Behind that hoarding we have been really busy levelling the ground and laying the foundations for our 21 stylish, sustainable, scandi style homes. Over the course of April you will see a lot more activity – with our homes really starting to take shape.

Our official launch date is Friday 2nd April which is when our sales cabin opens for visitors, Friday – Monday 10am to 5pm. If you would like to find out more, we would love to see you and talk you through these beautiful homes.

Booking is by appointment only at this stage and you can contact us as follows:

T: 01483 956 883

E: [minderhurst@trivselhus.co.uk](mailto:minderhurst@trivselhus.co.uk)

[www.trivselhus.co.uk](http://www.trivselhus.co.uk)

## New Canal Steps

We are delighted to have completed the construction of the new canal steps which were opened for public use on Monday 5 March 2021. The new steps, which lead to the canal from Deepcut Bridge Road, have improved access to the canal and have an integrated bicycle rail which will help promote leisure and commuter cycle use of the towpath.

Working next to the canal, within a Site of Special Scientific Interest, posed many challenges. The canal is rich with wildlife and we had very stringent procedures to work around the canal, including environmental containment systems to prevent any contamination. To mitigate the risk, further precast concrete stair-units were used instead of using in-situ concrete.

A major logistical challenge for this work was to find a way to get the excavator onto the towpath to excavate and remove the old steps. The safest and most practical way was to engage a local Canal transportation company to deliver the 3.5 tonne excavator on a barge via Frimley Lock down to Deepcut Bridge Road.

This work was completed over a 17-week period and was carried out as part of the Section 106 planning obligations for the Mindenhurst development.





# Easter Trail

2nd - 12th April

Join us for some springtime fun in the Central SANG.

Explore the woodland and hunt for pictures of Easter Eggs hidden in the trees. Find the letter on each egg to make an 8 letter seasonal word.

Get in touch once you know the word and we will deliver a chocolate egg to your door.

Happy hunting!

[hello@minderhurst.co.uk](mailto:hello@minderhurst.co.uk)

For further details please visit: [minderhurst.co.uk/whatson](https://minderhurst.co.uk/whatson)



## New access route

Due to the closure of Royal Way we know local residents lost this access route to the Central SANG. We listened to your feedback and have constructed a new temporary access path from Alma Gardens. This path runs behind Portesbery Road to the Central SANG and was opened on 8 March.

## New pub

Hall and Woodhouse hope that, as things improve in terms of the pandemic, they will be able to start construction this summer with the view to opening their doors in early 2022.

## New food store

We know that everyone is keen to find out more about the new food store. The sale of the food store parcel is still under negotiation. We should have more information to share with you soon.

## New homes

For more information about new homes in Minderhurst, please see the details below:

### CALA homes

[minderhurst@cala.co.uk](mailto:minderhurst@cala.co.uk)

### Bovis Homes

[info.southerncounties@bovishomes.co.uk](mailto:info.southerncounties@bovishomes.co.uk)

### Trivselhus

please visit [trivselhus.co.uk](https://trivselhus.co.uk)

## Construction programme

The timeline below outlines some key milestones for the development.

### Spring 2021

- Road upgrade to area around Bovis plots
- Ecology works and surveys
- Drainage diversion works

### Summer 2021

- Central SANG final landscaping and LAP
- Southern SUDS attenuation works
- New utility services from Deepcut Bridge Road to Blackdown Road
- Green Swathe works commence

### Autumn 2021

- Demolition of buildings within the path of the new loop road
- Utility services to Sergeant's Mess and within the northern site

### Winter 2021

- Commence sports hub
- ANGSt & cycle route
- Demolition of existing buildings - Southern SANG

# Building for the future



**MINDERHURST** is a new neighbourhood in the village of Deepcut, Surrey. Situated on the site of the former Princess Royal Barracks, Minderhurst will offer 1,200 new homes and essential local amenities including a new primary school, retail outlets, sports facilities, business premises and over 69 hectares of public green space.

For further information and the latest news please visit [minderhurst.co.uk](https://minderhurst.co.uk).



**SKANSKA**, a leading construction company and developer, is an inclusive and responsible business that is helping to build a better society. Drawing on our Scandinavian heritage, we are green, innovative and progressive, bringing people and technology together to build, upgrade and maintain the country's buildings and infrastructure.